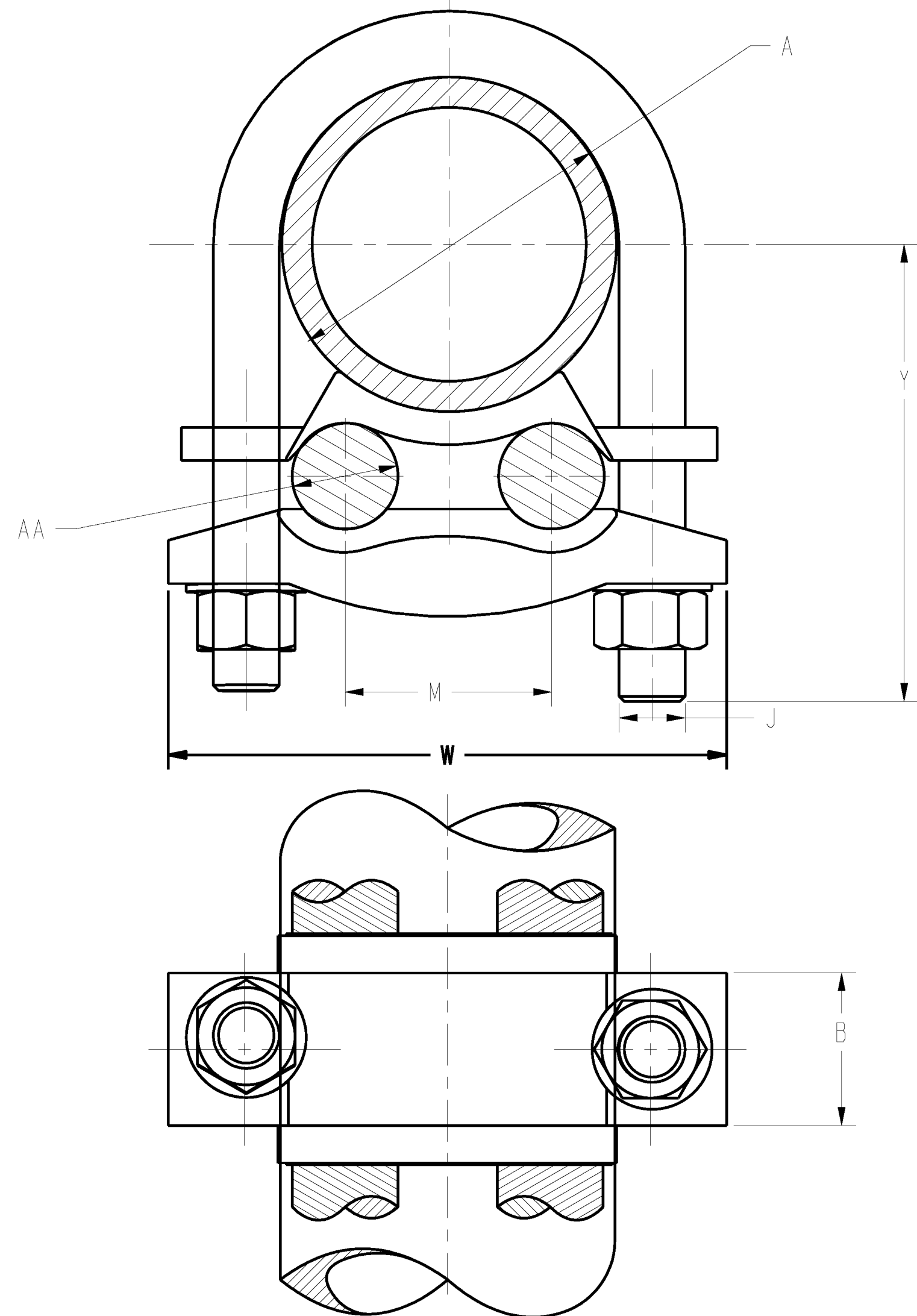


| REV | DATE | DESCRIPTION | ECO | BY | C'K'Y. |
|-----|-------------------------|---------------------|-------|----|--------|
| E | 2020-06-05 09:37:00 EDT | NEW CAT ADDED 60245 | 53654 | KV | NJ |

CONDUCTORS ACCOMMODATED

| I.P.S. PIPE | | ROD | | AWG | | METRIC WIRE SIZE | | CATALOG NUMBER | B | J | M | W | Y | "U" BOLT | TORQUE Lb*in [N*m] |
|-----------------------|----------------------------|-----------------------|---------------------------|----------------------|-----------------------|------------------------------|------------------------------|----------------|-----------|-----------|------------|------------|------------|----------|--------------------|
| NOMINAL DIAMETER (IN) | ACTUAL DIA. (IN) (MM) | NOMINAL DIAMETER (in) | ACTUAL DIAMETER (in) (mm) | MIN | MAX | MIN | MAX | | | | | | | | |
| 3" | 3.500 [89] | 3" | 3.00 [76] | #4 SOL(.204 DIA) | 2/0 STR(.416 DIA) | 25mm ² STR[6.5] | 50mm ² STR[9.3] | GD2026 | 1.50 [38] | 3/8" [10] | 2.75 [70] | 4.81 [118] | 3.38 [83] | 258 | 240 [27.0] |
| 3" | 3.500 [89] | 3" | 3.00 [76] | 2/0 SOL(.365 DIA) | 250 Kcmil(.575 DIA) | 70mm ² STR[10.9] | 120mm ² STR[14.4] | GD2029 | 1.50 [38] | 3/8" [10] | 2.88 [73] | 4.81 [118] | 3.38 [83] | 258 | 240 [27.0] |
| 3" | 3.500 [89] | 3" | 3.00 [76] | 300 kcmil(.630 DIA) | 500 Kcmil(.814 DIA) | 185mm ² STR[17.8] | 240mm ² STR[20.3] | GD2034 | 1.56 [40] | 1/2" [13] | 2.31 [59] | 5.31 [130] | 4.00 [98] | 282 | 480 [54.1] |
| 3" | 3.500 [89] | 3" | 3.00 [76] | 550kcmil(.855 DIA) | 750 Kcmil(.998 DIA) | 300mm ² STR[22.6] | 400mm ² STR[26.1] | GD2039 | 1.88 [48] | 5/8" [16] | 2.31 [59] | 5.31 [130] | 4.13 [101] | --- | 660 [74.4] |
| 3" | 3.500 [89] | 3" | 3.00 [76] | 800 kcmil(1.031 DIA) | 1000 Kcmil(1.152 DIA) | 400mm ² STR[26.1] | 500mm ² STR[28.3] | GD2044 | 2.00 [51] | 5/8" [16] | 2.31 [59] | 5.31 [130] | 4.25 [104] | --- | 660 [74.4] |
| 3 1/2" | 4.000 [102] | 3 1/2" | 3.50 [89] | #8 SOL(.129 DIA) | #4 STR(.232 DIA) | 10mm ² SOL[2.6] | 16mm ² STR[5.1] | GD214C | 1.44 [37] | 3/8" [10] | 2.31 [59] | 5.31 [130] | 3.75 [92] | 264 | 240 [27.0] |
| 3 1/2" | 4.000 [102] | 3 1/2" | 3.50 [89] | #4 SOL(.204 DIA) | 2/0 STR(.416 DIA) | 25mm ² STR[6.5] | 50mm ² STR[9.3] | GD2126 | 1.50 [38] | 3/8" [10] | 2.31 [59] | 5.31 [130] | 3.75 [92] | 264 | 240 [27.0] |
| 3 1/2" | 4.000 [102] | 3 1/2" | 3.50 [89] | 2/0 SOL(.365 DIA) | 250 Kcmil(.575 DIA) | 70mm ² STR[10.9] | 120mm ² STR[14.4] | GD2129 | 1.50 [38] | 3/8" [10] | 2.31 [59] | 5.31 [130] | 3.75 [92] | 264 | 240 [27.0] |
| 3 1/2" | 4.000 [102] | 3 1/2" | 3.50 [89] | 300 kcmil(.630 DIA) | 500 Kcmil(.814 DIA) | 185mm ² STR[17.8] | 240mm ² STR[20.3] | GD2134 | 1.56 [40] | 1/2" [13] | 3.13 [80] | 5.69 [139] | 3.25 [80] | 436 | 480 [54.1] |
| 3 1/2" | 4.000 [102] | 3 1/2" | 3.50 [89] | 550kcmil(.855 DIA) | 750 Kcmil(.998 DIA) | 300mm ² STR[22.6] | 400mm ² STR[26.1] | GD2139 | 1.88 [48] | 5/8" [16] | 2.88 [73] | 6.06 [148] | 4.88 [120] | 373 | 660 [74.4] |
| 3 1/2" | 4.000 [102] | 3 1/2" | 3.50 [89] | 800 kcmil(1.031 DIA) | 1000 Kcmil(1.152 DIA) | 400mm ² STR[26.1] | 500mm ² STR[28.3] | GD2144 | 2.00 [51] | 5/8" [16] | 2.75 [70] | 6.06 [148] | 4.88 [120] | 373 | 660 [74.4] |
| 4" | 4.500 [114] | 4" | 4.00 [102] | #8 SOL(.129 DIA) | #4 STR(.232 DIA) | 10mm ² SOL[2.6] | 16mm ² STR[5.1] | GD224C | 1.56 [40] | 3/8" [10] | 4.19 [106] | 5.94 [146] | 3.69 [90] | 261 | 240 [27.0] |
| 4" | 4.500 [114] | 4" | 4.00 [102] | #4 SOL(.204 DIA) | 2/0 STR(.416 DIA) | 25mm ² STR[6.5] | 50mm ² STR[9.3] | GD2226 | 1.63 [41] | 3/8" [10] | 3.75 [95] | 5.81 [142] | 3.69 [90] | 261 | 240 [27.0] |
| 4" | 4.500 [114] | 4" | 4.00 [102] | 2/0 SOL(.365 DIA) | 250 Kcmil(.575 DIA) | 70mm ² STR[10.9] | 120mm ² STR[14.4] | GD2229 | 1.63 [41] | 3/8" [10] | 3.69 [94] | 5.81 [142] | 3.69 [90] | 261 | 240 [27.0] |
| 4" | 4.500 [114] | 4" | 4.00 [102] | 300 kcmil(.630 DIA) | 500 Kcmil(.814 DIA) | 150mm ² STR[16.0] | 240mm ² STR[20.3] | GD2234 | 1.38 [35] | 1/2" [13] | 3.31 [84] | 6.19 [152] | 4.00 [98] | 262 | 480 [54.1] |
| 4" | 4.500 [114] | 4" | 4.00 [102] | 550kcmil(.855 DIA) | 750 Kcmil(.998 DIA) | 300mm ² STR[22.6] | 400mm ² STR[26.1] | GD2239 | 1.88 [48] | 5/8" [16] | 3.63 [92] | 6.56 [161] | 4.13 [101] | 377 | 660 [74.4] |
| 4" | 4.500 [114] | 4" | 4.00 [102] | 800 kcmil(1.031 DIA) | 1000 Kcmil(1.152 DIA) | 400mm ² STR[26.1] | 500mm ² STR[28.3] | GD2244 | 2.00 [51] | 5/8" [16] | 3.25 [83] | 6.56 [161] | 4.13 [101] | 377 | 660 [74.4] |
| 5" | 5.500 [140] | 5" | 5.00 [127] | #4 SOL(.204 DIA) | 2/0 STR(.416 DIA) | 25mm ² STR[6.5] | 50mm ² STR[9.3] | GD2426 | 1.75 [44] | 1/2" [13] | 4.38 [111] | 7.25 [184] | 4.63 [117] | 306 | 480 [54.1] |
| 1/2" OR 3/4" | .840 OR 1.050 [21] OR [27] | 7/8" OR 1" | .875 OR .925 [22] OR [25] | #8 SOL(.129 DIA) | #4 STR(.232 DIA) | 10mm ² SOL[2.6] | 16mm ² STR[5.1] | GD114C | 1.13 [29] | 5/8" [16] | 3.25 [83] | 2.38 [58] | 1.75 [43] | 222 | 660 [74.4] |
| 6" | 6.625 [168] | -- | -- | #4 SOL(.204 DIA) | 2/0 STR(.416 DIA) | 25mm ² STR[6.5] | 50mm ² STR[9.3] | GD8626 | 1.63 [41] | 1/2" [13] | 6.03 [153] | 8.19 [201] | 4.31 [106] | 275 | 480 [54.1] |
| -- | -- | 3/4" | .75 [19] | 300 kcmil(.630 DIA) | 500 Kcmil(.814 DIA) | 150mm ² STR[16.0] | 240mm ² STR[20.3] | GD6434 | 1.56 [40] | 1/2" [13] | 1.00 [25] | 3.59 [88] | 3.69 [90] | 302 | 480 [54.1] |
| 6" | 6.625 [168] | -- | -- | 2/0 SOL(.365 DIA) | 250 Kcmil(.575 DIA) | 70mm ² STR[10.9] | 120mm ² STR[14.4] | GD8629 | 1.63 [41] | 1/2" [13] | 5.81 [148] | 8.31 [211] | 4.31 [106] | 275 | 480 [54.1] |



- NOTES:
1. MATERIAL : CAST COPPER ALLOY, DURIUM #6 (U-BOLT, HEX NUTS & S.P.L.W).
 2. UL 467 LISTED, FILE NO. E9999. ACCEPTABLE FOR DIRECT BURIAL.
 3. SUITABLE FOR BURIAL IN GROUND OR CONCRETE.
 4. DIMENSIONS IN BRACKETS [] ARE IN MILLIMETERS, ROUNDED OFF TO THE NEAREST MILLIMETER, UNLESS OTHERWISE NOTED, AND ARE FOR REFERENCE ONLY.
 5. FOR TIN PLATING ADD SUFFIX "TN".

TO ORDER BURNDY® PRODUCTS CALL
 UNITED STATES
 1-800-346-4175 (LONDONDERRY, NH)
 CANADA:
 1-800-361-6975 (QUEBEC)
 1-800-387-6487 (ALL OTHER PROVINCES)
 FOR PRODUCT INFO: <http://www.burndy.com>

| GROUND CONNECTOR | |
|------------------|---------------------|
| ITEM NO: | SEE TABLE |
| CAT. NO: | GD--(TABLE) |
| DRAWN BY: | R PERREAULT 5/24/94 |
| CHECKER: | -- |
| DSN APPVL: | G DITROIA 11/11/93 |
| MFG APPVL: | -- |
| QA APPVL: | A LLOYD 12/3/93 |
| MKT APPVL: | K WOO 11/11/93 |
| PROD FAM: | -- |
| PROJECT #: | FPN1506071 |
| DOCUMENT TYPE: | Sales |
| REL LEVEL: | Released |
| SCALE: | 3:2 |
| DRAWING NO: | SD013775 |
| REV: | E |
| SHEET 2 OF 2 | |

REV: PE0200